

D

-

B

- A

- TOOLING:

- FINISH:

13. PLATING SPECIFICATION:

14. SURFACE FINISH:

15. SOLDERMASK :

- COLOR
(X) GREEN

- TESTING :

18. A TIME DOMAIN REFLECTOMETER REPORT (TDR) FOR EACH IMPEDANCE CONTROLLED LAYER & A CERTIFICATE OF COMPLIANCE SHALL BE PROVIDED BY VENDOR AT TIME OF SHIPMENT. INSTANCES WHERE TDR TESTING CAN'T BE PERFORMED BECAUSE THE TRACE LENGTH IS TOO SHORT ON THE OUTER LAYERS AT THE PIN ESCAPES IS ACCEPTABLE, ALL OTHER INSTANCES MUST BE REPORTED.

MISCELLANEOUS:

20. FOR VIA FILL INFORMATION REFER TO DRILL CHART:
 () NON-CONDUCTIVE EPOXY FILL ALL 0.XXXX INCHES DRILLED VIAS
 () COPPER FILL ALL 0.XXXX INCHES DRILLED VIAS

21. INTENTIONAL SHORTS:
IF AN INTENTIONAL SHORT REPORT IS SUPPLIED AND DOES NOT MATCH THE FAB DATA THEN
ADI APPROVAL IS REQUIRED.

22. PEMNUTS:
 () PEMNUTS TO BE INSTALLED BY FABRICATOR
 () PEMNUTS NOT TO BE INSTALLED BY FABRICATOR
 (X) NOT APPLICABLE

23. MANUFACTURER TO ETCH/STAMP WITH PERMANENT NON-CONDUCTIVE INK
ON SECONDARY SIDE UNLESS OTHERWISE SPECIFIED:
A. UL CODE-FLAMMABILITY RATING FOR THOSE APPROVED MATERIALS(IF APPLICABLE)
B. DATE CODE
C. LOT NUMBER
D. MANUFACTURER LOGO

25. PANELIZATION:
BOARDS TO BE SHIPPED IN ARRAY AND KEPT INTACT
PANEL TO BE SUBJECTED TO CUSTOMERS APPROVAL
PANEL SOLDER PASTE STENCIL GERBER TO BE PROVIDED TO ANALOG

27. MINIMUM DESIGN LINE WIDTH IS .010 INCH.
28. MINIMUM DESIGN LINE SPACING IS .005 INCH.

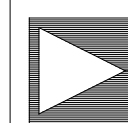
FAB NOTES REVISION: NOVEMBER 21 2022

4 - LAYER STACK - UP

LAMINATION DIAGRAM				
LAYER NUMBER	LAYER NAME	COPPER THICKNESS (OZ./INCH)	DIELECTRIC THICKNESS (INCH)	MATERIALS
1	TOP	2 OZ., 0.0028"		FINAL CU (THICKNESS AFTER PLATING)
			0.0047	ISOLA 370HR/EQUIVALENT
2	L2_GND	1 OZ., 0.0014"		CU CLAD
			0.047	ISOLA 370HR/EQUIVALENT
3	L3_GND	1 OZ., 0.0014"		CU CLAD
			0.0047	ISOLA 370HR/EQUIVALENT
4	BOTTOM	2 OZ., 0.0028"		FINAL CU (THICKNESS AFTER PLATING)

THE FINISHED PCB THICKNESS TO BE: 0.062" +/-10%

PRIMARY SIDE

ANALOG
DEVICES

WWM
DIVISION
804 WOBURN STREET
WILMINGTON, MA 01881

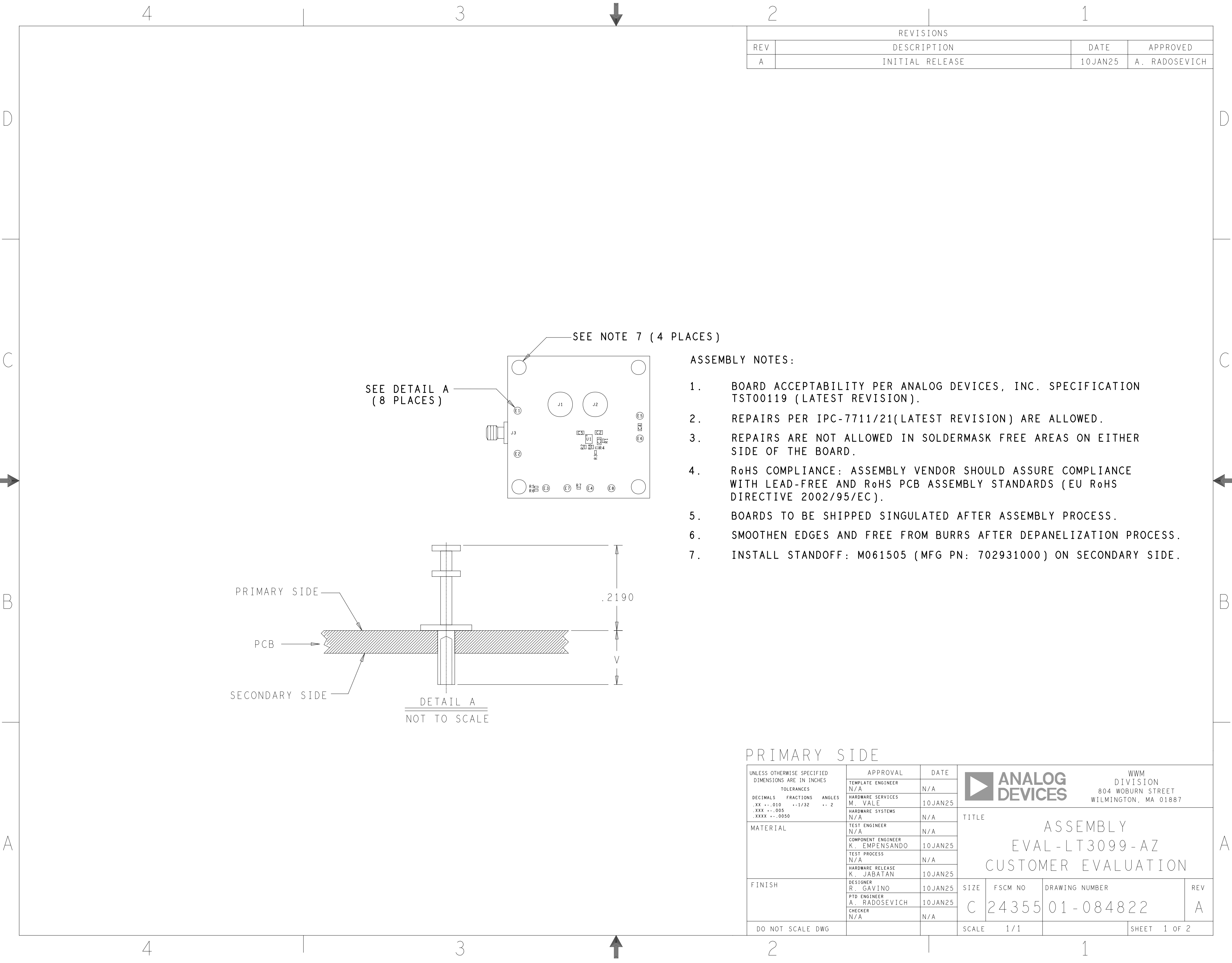
SIZE	FSCM NO	DRAWING NUMBER	REV
C	24355	09-084822	A
SCALE	1/1		SHEET 2 OF 2

1

C

--	--

 A




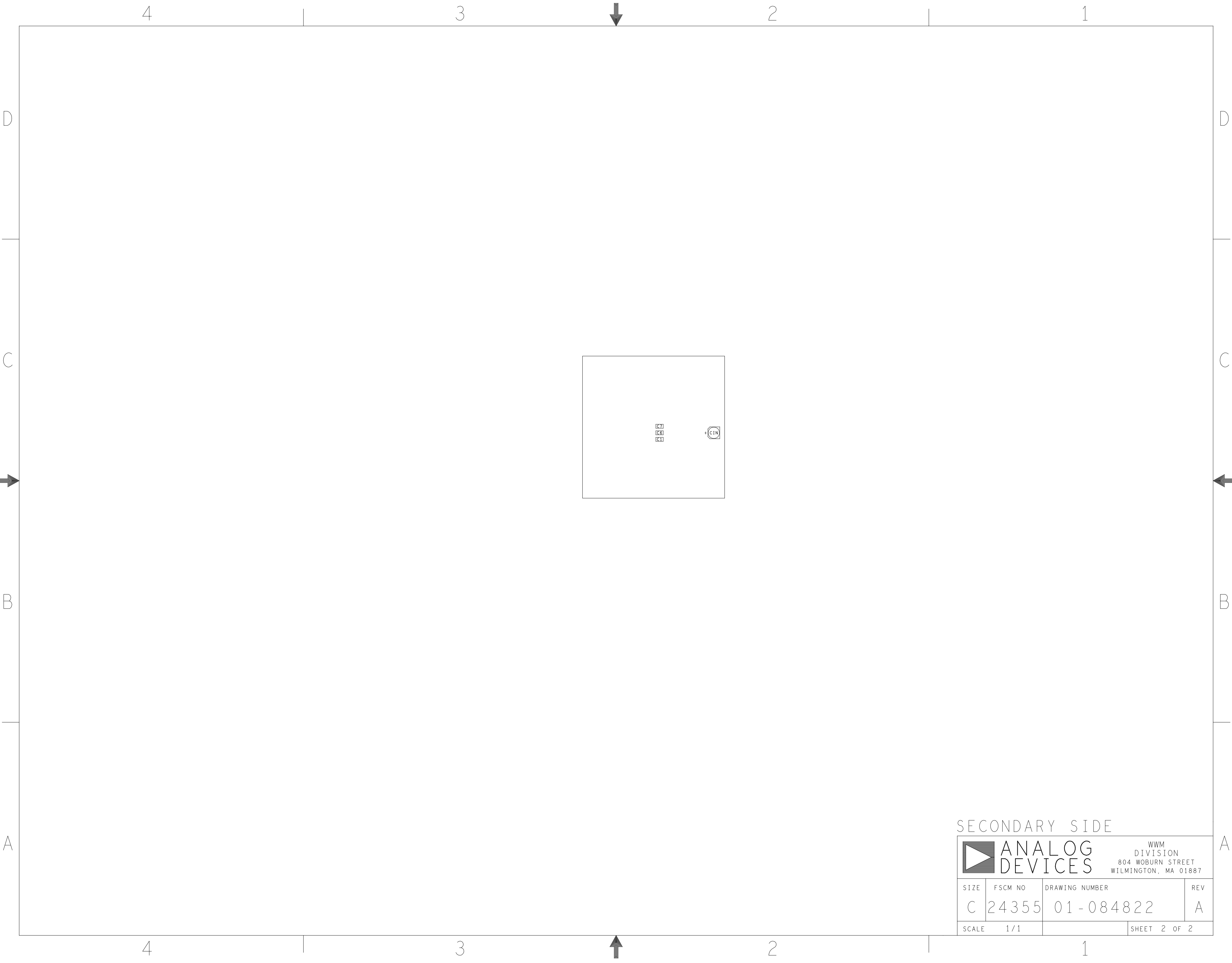
REVISIONS			
REV	DESCRIPTION	DATE	APPROVED
A	INITIAL RELEASE	10JAN25	A. RADOSEVICH

ASSEMBLY NOTES:

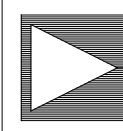
1. BOARD ACCEPTABILITY PER ANALOG DEVICES, INC. SPECIFICATION TST00119 (LATEST REVISION).
2. REPAIRS PER IPC-7711/21(LATEST REVISION) ARE ALLOWED.
3. REPAIRS ARE NOT ALLOWED IN SOLDERMASK FREE AREAS ON EITHER SIDE OF THE BOARD.
4. RoHS COMPLIANCE: ASSEMBLY VENDOR SHOULD ASSURE COMPLIANCE WITH LEAD-FREE AND RoHS PCB ASSEMBLY STANDARDS (EU RoHS DIRECTIVE 2002/95/EC).
5. BOARDS TO BE SHIPPED SINGULATED AFTER ASSEMBLY PROCESS.
6. SMOOTHEN EDGES AND FREE FROM BURRS AFTER DEPANELIZATION PROCESS.
7. INSTALL STANDOFF: M061505 (MFG PN: 702931000) ON SECONDARY SIDE.

PRIMARY SIDE

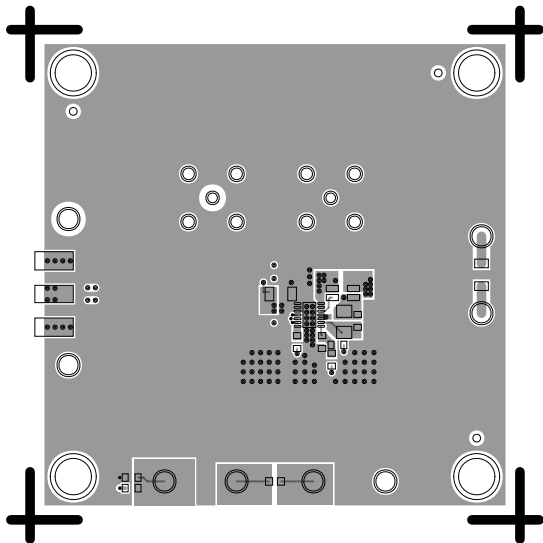
UNLESS OTHERWISE SPECIFIED DIMENSIONS ARE IN INCHES			APPROVAL		DATE		<div><div></div><div>ANALOG DEVICES</div></div> <div>WWM DIVISION 804 WOBURN STREET WILMINGTON, MA 01887</div>		
TOLERANCES			TEMPLATE ENGINEER		N/A				
DECIMALS	FRACTIONS	ANGLES	HARDWARE SERVICES		10JAN25				
.XX .. .010	..1/32	.. 2	M VALE						
.XXX .. .005			HARDWARE SYSTEMS		N/A		TITLE ASSEMBLY EVAL-LT3099-AZ CUSTOMER EVALUATION		
.XXXX .. .0050			N/A						
MATERIAL			TEST ENGINEER		N/A				
			COMPONENT ENGINEER		10JAN25				
			K. EMPENSANDO						
			TEST PROCESS		N/A				
			HARDWARE RELEASE		10JAN25				
			K. JABATAN						
FINISH			DESIGNER		10JAN25				
			R. GAVINO						
			PTD ENGINEER		10JAN25				
			A. RADOSEVICH						
			CHECKER		N/A				
			N/A				SIZE		
DO NOT SCALE DWG							FSCM NO		
							DRAWING NUMBER		
							REV		
							C		
							24355		
							01 - 084822		
							A		
							SCALE		
							1 / 1		
							SHEET		
							1 OF 2		



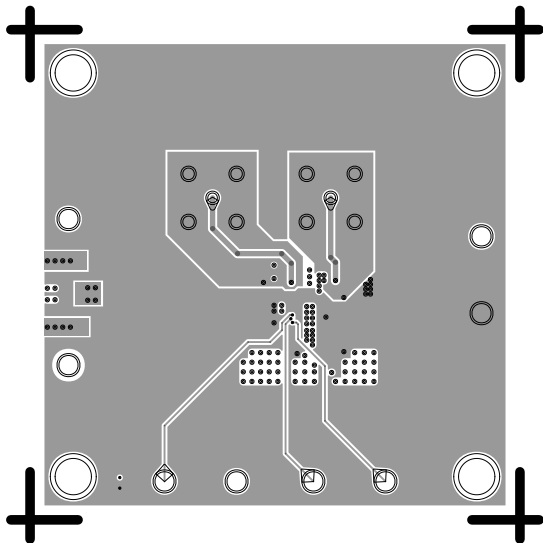
SECONDARY SIDE

		ANALOG DEVICES		WWM DIVISION 804 WOBURN STREET WILMINGTON, MA 01887	
		SIZE	FSCM NO	DRAWING NUMBER	REV
C		24355	01-084822		A
SCALE		1/1	SHEET 2 OF 2		

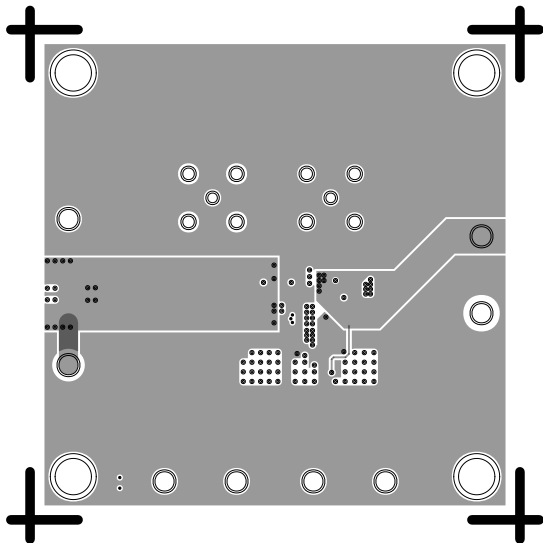
L1 PRIMARY
08-084822-01
REV A



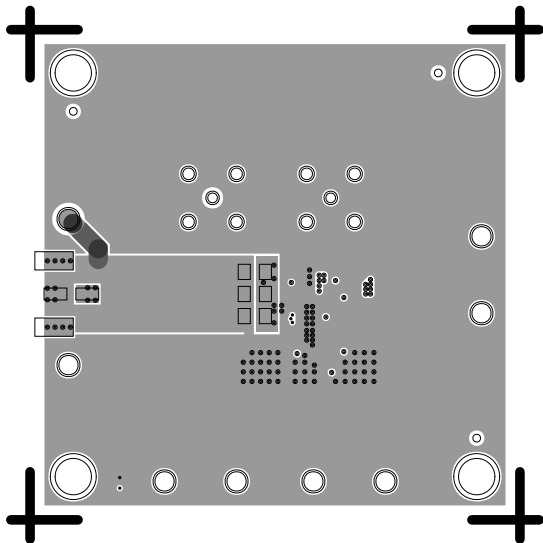
L2_GND
08-084822-07
REV A



L3_GND
08-084822-08
REV A



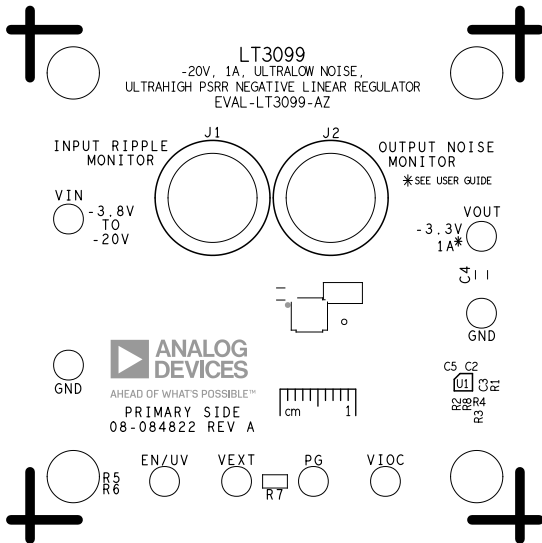
L4 SECONDARY
08-084822-02
REV A



SILKSCREEN PRIMARY

08-084822-03

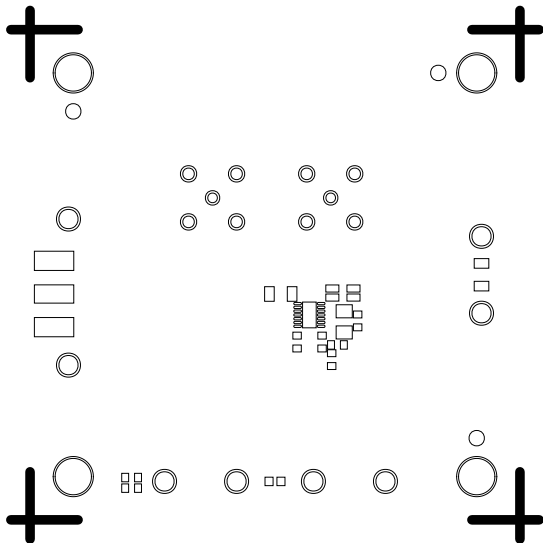
REV A



SOLDERMASK PRIMARY

08-084822-04

REV A



SILKSCREEN SECONDARY

08-084822-05

REV A



○ C7
○ C8
○ C1

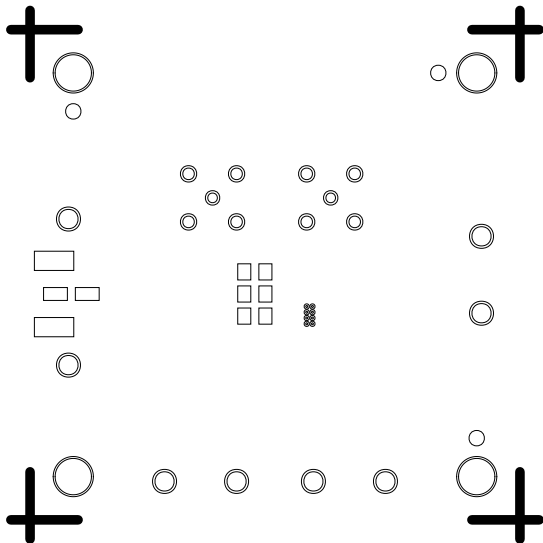
08-084822 REV A
SECONDARY SIDE



SOLDERMASK SECONDARY

08-084822-06

REV A



PASTEMASK PRIMARY

08-084822-09

REV A



PASTEMASK SECONDARY

08-084822-10

REV A

